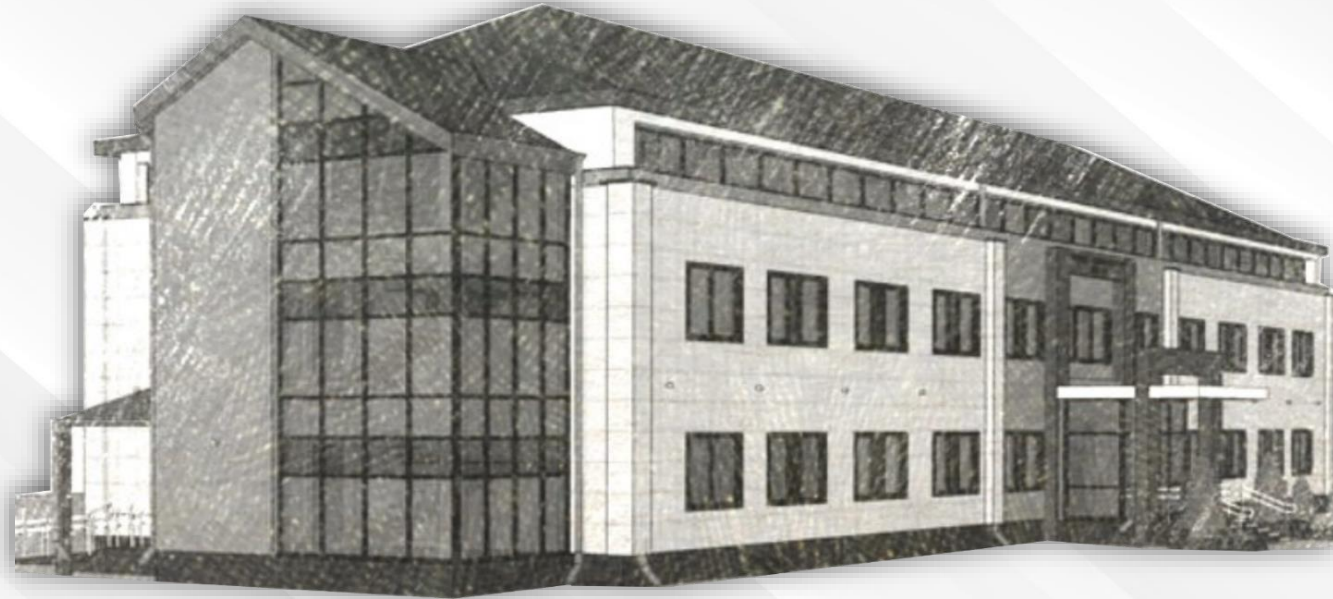


# mogilev

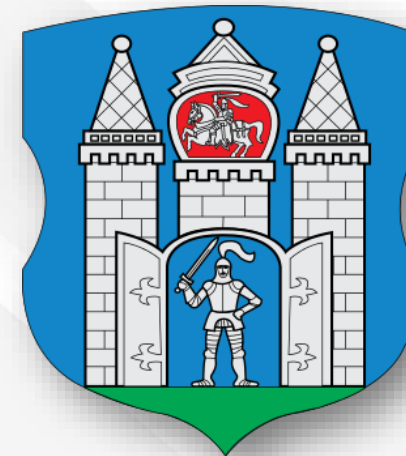
free economic zone



## ADVANTAGES AND POTENTIAL OF THE "MOGILEV" FEZ FOR THE IMPLEMENTATION OF INVESTMENT PROJECTS

2023, Mogilev

**HOME** FOR YOUR  
**BUSINESS**



- ✓ **Mogilev region is the most eastern region of the Republic of Belarus**
- ✓ **The population of the region exceeds 1.1 million people**
- ✓ **The administrative center of Mogilev region – Mogilev city is located in 80 km. from the Russian Federation border at the intersection of the most important Trans-European corridors: M1 (Brest-Moscow) and E95 (St. Petersburg-Odessa)**

## ADVANTAGES OF THE GEOGRAPHICAL LOCATION OF THE MOGILEV REGION

**The geographical location of the Mogilev region provides direct access to the market of the Eurasian Economic Union, which can be used by investors when placing their production and logistics units on the territory of the region.**



**Mogilev Airport is capable for receiving aircraft used for servicing international cargo lines. There is a large railway junction in Mogilev capable of sending and receiving cargo of all types and types, there are storage warehouses and well-developed road infrastructure.**

## OBJECTIVES OF FREE ECONOMIC ZONES:

- ✓ **The creation and development of innovative and technology-based enterprises**
- ✓ **The application of advanced technologies**
- ✓ **Formation of a favorable investment climate**
- ✓ **Attraction of domestic and foreign investments**
- ✓ **Growth of the exports**
- ✓ **Creation of new jobs**





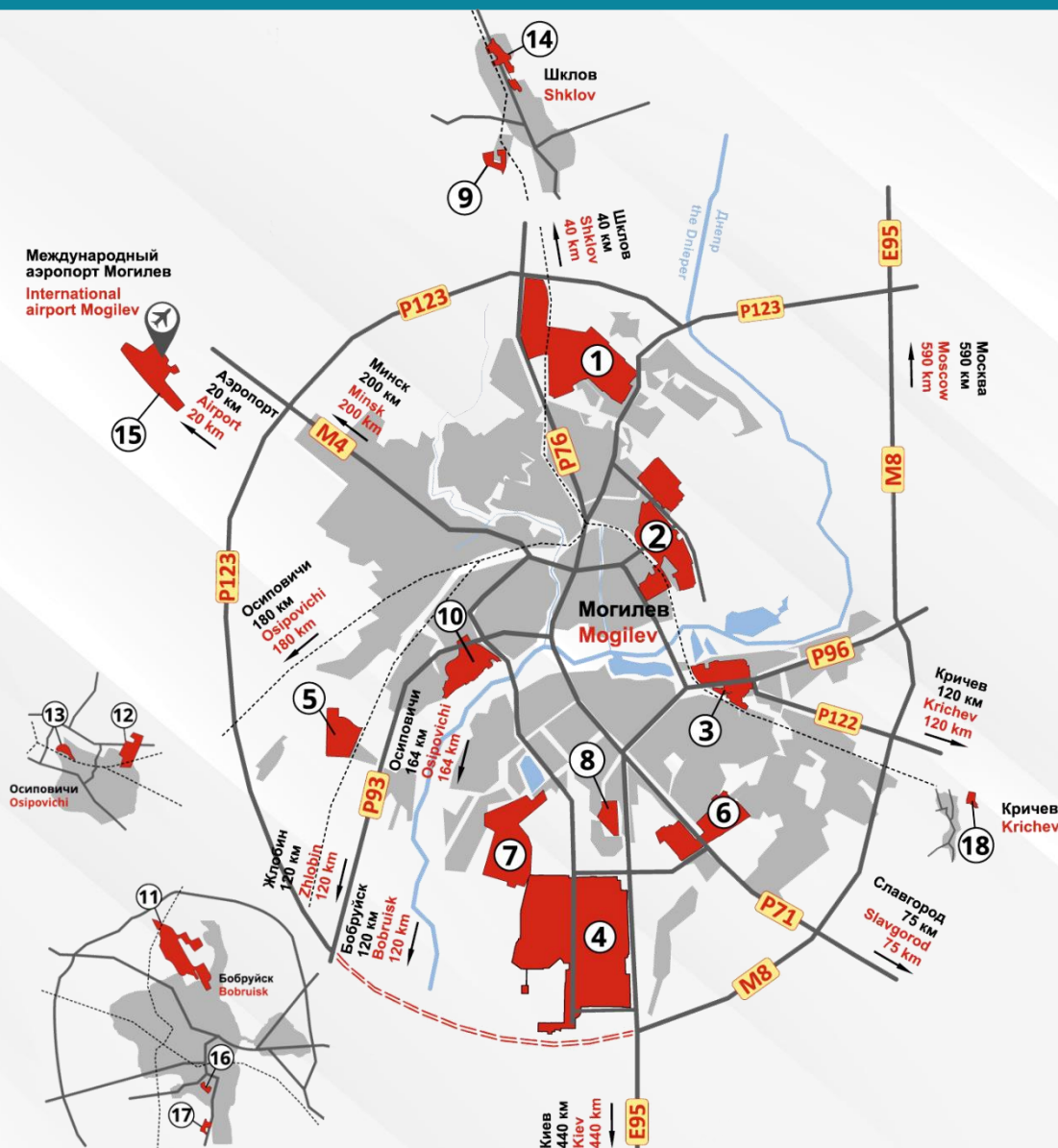
**"MOGILEV" FEZ  
was established in 2002**



**18 plots with a total area  
of 3,712 hectares**



**The area of vacant  
land plots ≈ 420 ha**



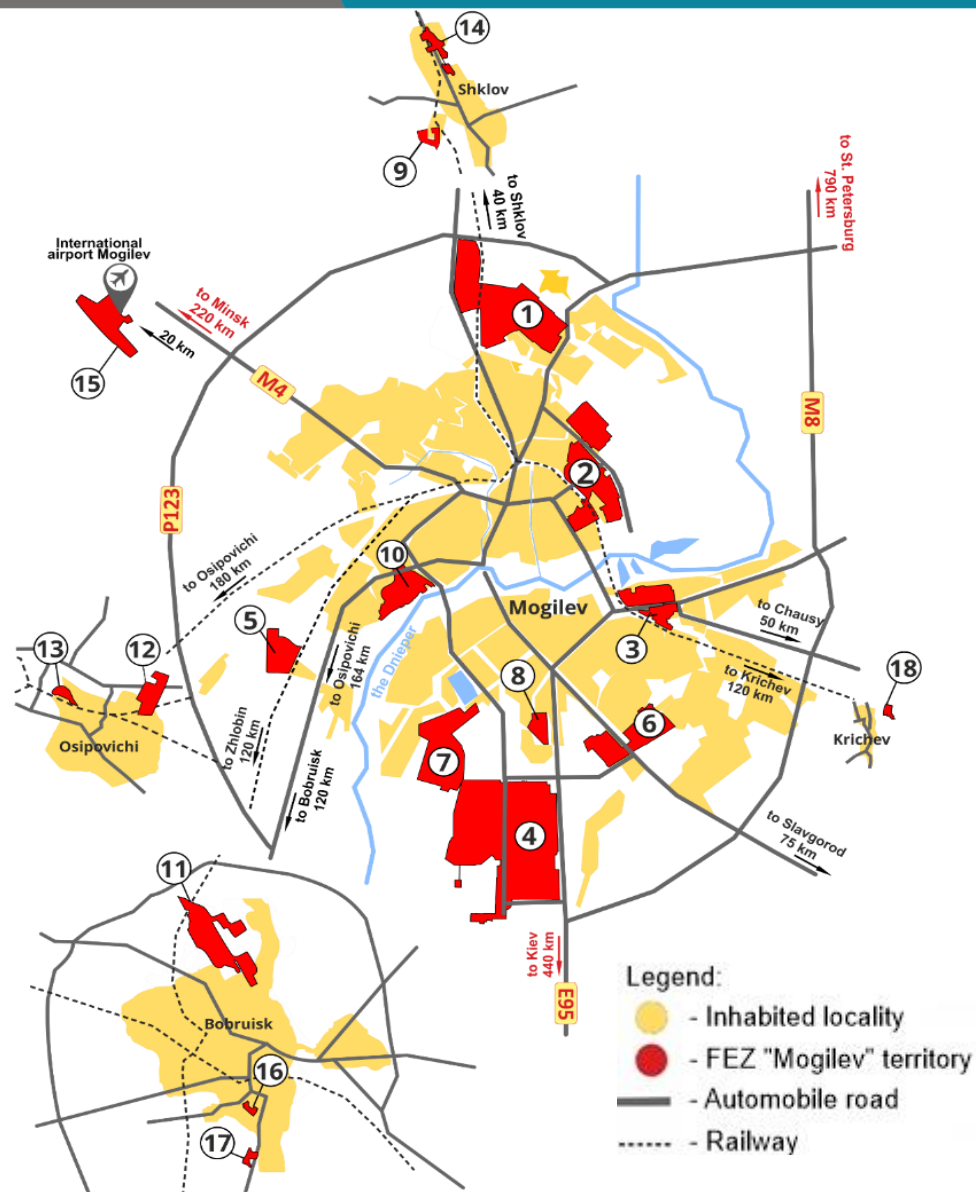
**The area of production  
premises is ≈ 120K m2**



**45 residents  
from 14 countries**



**The total volume  
of investments is more  
than 1.5 billion. euro**



✓ **The territory of "Mogilev" FEZ consists of 18 sites with the total area of 3,339.4 ha**

✓ **Free land plots area ≈ 420 ha**

✓ **Production facilities > 120,000 m<sup>2</sup>**

**Site 1 – 373,00 ha**

**Site 2 – 182,60 ha**

**Site 3 – 65,69 ha**

**Site 4 – 925,23 ha**

**Site 5 – 78,50 ha**

**Site 6 – 187,95 ha**

**Site 7 – 237,03 ha**

**Site 8 – 58,00 ha**

**Site 9 – 92,14 ha**

**Site 10 – 102,74 ha**

**Site 11 – 322,02 ha**

**Site 12 – 248,00 ha**

**Site 13 – 63,75 ha**

**Site 14 – 104,05 ha**

**Site 15 – 206,75 ha**

**Site 16 – 14,33 ha**

**Site 17 – 22,13 ha**

**Site 18 – 55,48 ha**

***All "Mogilev" FEZ sites are located in industrial hubs of Mogilev city and Mogilev region***

**TAX PREFERENCES:**

- ✓ **Exemption from tax on income received from the sale of goods (works, services) of own production for export or to other FEZ residents**
- ✓ **Real estate tax exemption**
- ✓ **Exemption from land tax and rent for land plots within the boundaries of the "Mogilev" FEZ**

**CUSTOMS PREFERENCES:**

- ✓ **Exemption from payment of import customs duties and taxes on raw materials placed under the free customs zone procedure when exporting finished products outside the Eurasian economic union**



**Strategically advantageous  
geographical position**



- ✓ *At the intersection of the main trans-European corridors "North-South" and "East-West"*
- ✓ *Gateway to the Eurasian economic union with a population of more than 184 million people*
- ✓ *Developed transport infrastructure*

**Qualified specialists**



- ✓ *More than 90% of the population has a higher, secondary or basic education*
- ✓ *7 institutions of higher education*
- ✓ *19 institutions of secondary specialized education*
- ✓ *15 institutions of vocational education*

**Historically developed  
industries**



- ✓ *Mechanical engineering*
  - ✓ *Woodworking*
  - ✓ *Chemical industry*
- ✓ *Production of building materials*
  - ✓ *Metallurgy*



**ONE DAY**

**DEPENDS  
ON INVESTOR**

**IN 15 DAYS**

- SUBMISSION OF AN APPLICATION FOR REGISTRATION AS A RESIDENT OF FEZ "MOGILEV"
- STATE REGISTRATION OF A LEGAL ENTITY

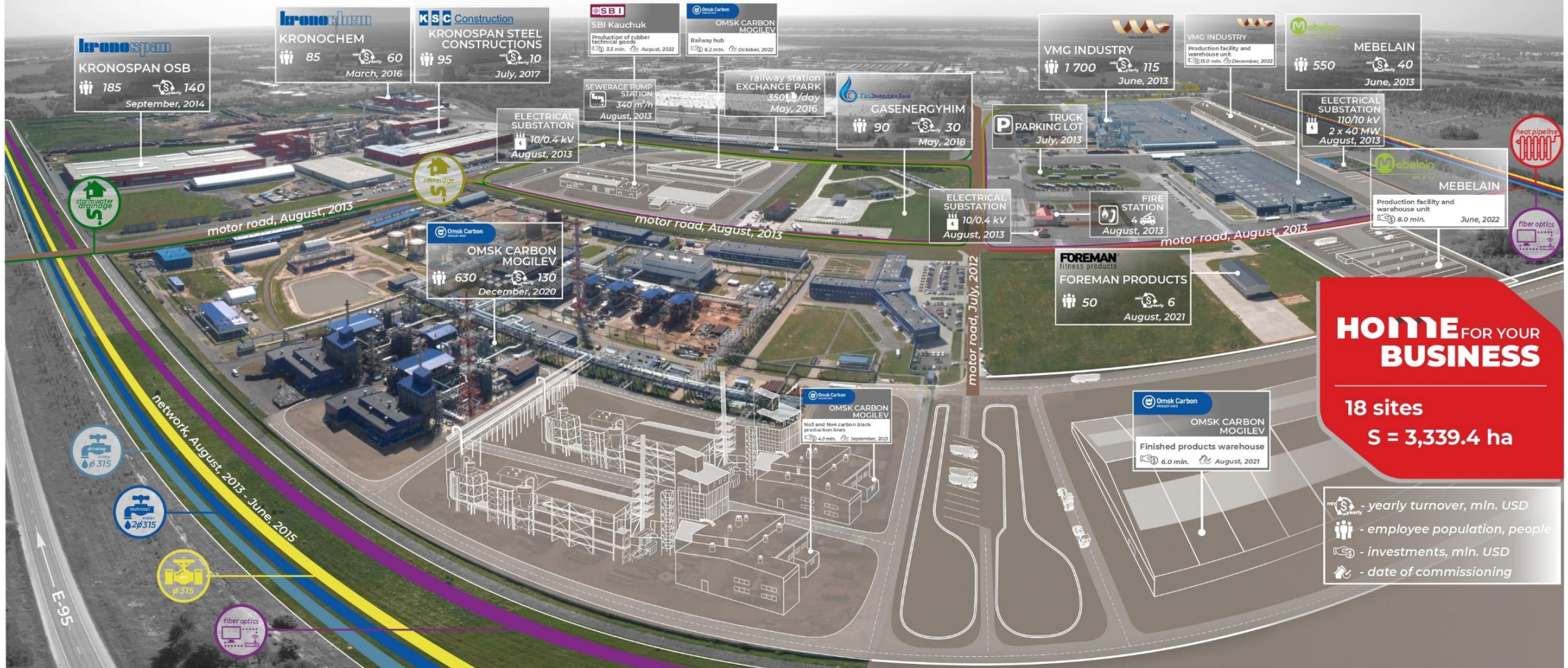
- DEVELOPMENT OF A BUSINESS PLAN BY THE INVESTOR

- BUSINESS PLAN REVIEW AND DECISION MAKING ON REGISTRATION AS A RESIDENT OF FEZ "MOGILEV"

# ENGINEERING AND TRANSPORT INFRASTRUCTURE OF THE LEADING INVESTMENT SITE No 4 OF "MOGILEV" FEZ

## MAIN OBJECTS OF ENGINEERING AND TRANSPORT INFRASTRUCTURE

- ELECTRIC TRANSFORMER SUBSTATIONS • POWER SUPPLY NETWORKS • HEAT SUPPLY NETWORKS • AUTOMOBILE ROADS
- ACCESS RAILWAYS • PARKINGS FOR TRUCKS • WATER PIPE NETWORKS • STORM WATER COLLECTORS



**HOME FOR YOUR BUSINESS**

18 sites  
S = 3,339.4 ha

- yearly turnover, mln. USD  
 - employee population, people  
 - investments, mln. USD  
 - date of commissioning

The administration of the "Mogilev" FEZ within the boundaries of its sites has created a number of engineering and transport infrastructure facilities the presence of which allows the investor to start the practical implementation of the project and obtain the first products in shortest terms

**GREENFIELD**



**421 ha**  
for the construction  
of new industries

**BROWNFIELD**



**120 ths. m<sup>2</sup>**  
for purchase  
or rent

# COMMUNICATION AND INFORMATION ACTIVITY OF THE ADMINISTRATION OF "MOGILEV" FEZ



**DIRECT NEGOTIATIONS WITH POTENTIAL INVESTORS**



**AGREEMENTS AND MEMORANDUMS OF COOPERATION**



**PRESS RELEASES IN THE MEDIA, VIDEOS ON TV**



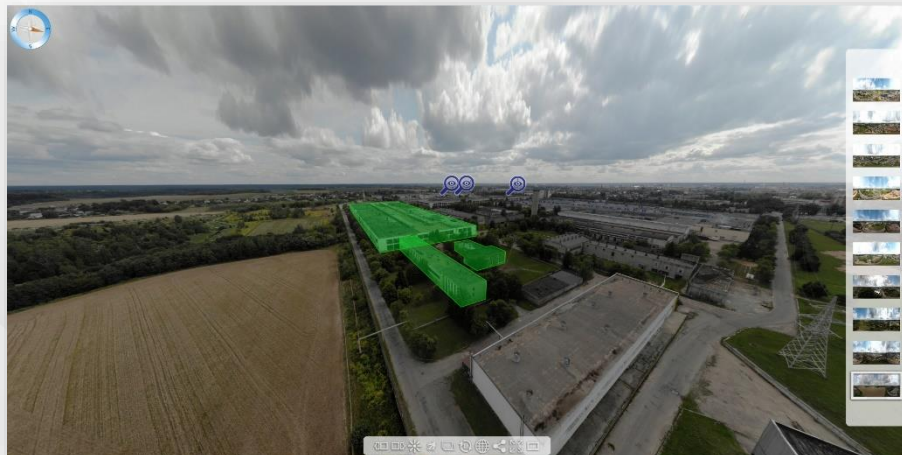
**PRESENTATIONS AT INTERNATIONAL EVENTS**



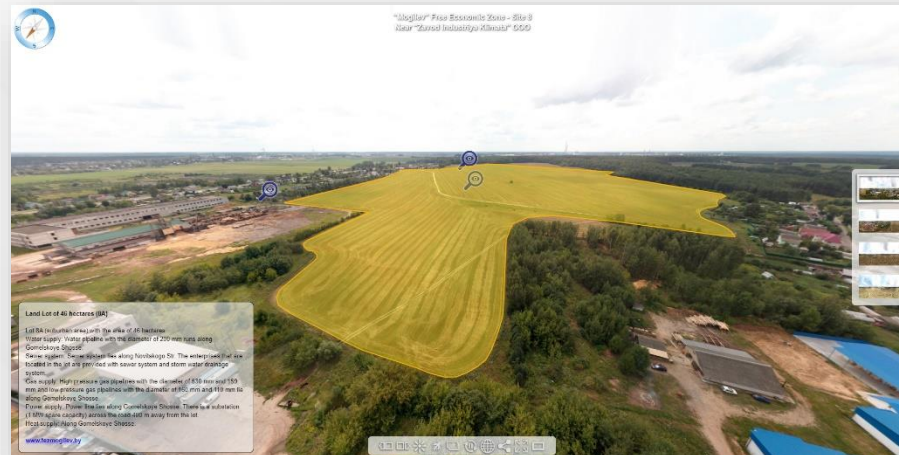
**WEBINARS AND ONLINE MEETINGS**



**IMPROVEMENT OF THE 3D TOUR SYSTEM**



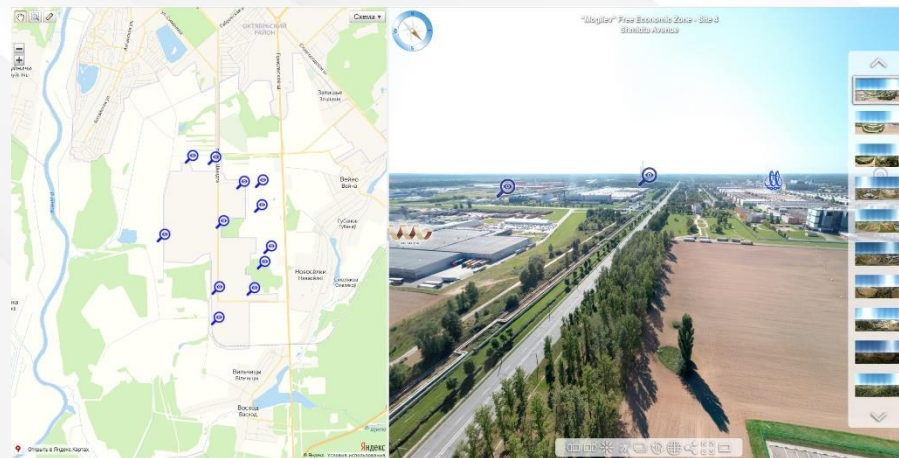
**Information about the object**



**Information about the land lots**



**Information about the resident**



**Interactive map**

**mogilev**

free economic zone

**"MOGILEV" FEZ – HOME FOR YOUR BUSINESS**

**78A Cheluskintsev Str.,  
Mogilev, 212003,  
Republic of Belarus  
Tel.: +375 222 62-66-01  
info@fezmogilev.by**



**FEZMOGILEV.BY**